



Before using your washing machine, please read this manual carefully and keep it for future reference.

Front Loading Combo

OWNER'S MANUAL

MODEL : US-FC70-DS12DSH

Read This Manual

Inside you will find many helpful hints on how to use and maintain your washing machine properly. Just a little preventative care on your part can save you a great deal of time and money over the life of your washing machine. You'll find many answers to common problems in the chart of troubleshooting tips. If you review the chart of Troubleshooting Tips first, you may not need to call for service. This Combo use condenser tumble dryer method.

Contents

Contents

Safety And Precautions.....	2
Safety and precautions.....	2
Important safety instructions.....	5
Grounding instructions.....	6
Before operating this machine.....	6
Attention shall be paid to protecting the machine.....	6
Cautions when moving the machine.....	6
Cautions when washing clothes.....	7
Installation Requirements.....	8
Tools and parts.....	8
Location requirements.....	9
Installation clearances.....	9
Electrical requirements.....	9
Washer dimensions.....	10
Unpacking the washing machine.....	10
Installation Instructions.....	11
Dispose of the packing materials.....	11
Remove transport bolts and foam.....	11
Select the location.....	11
Install inlet pipe.....	12
Drain system options.....	12
Level the washer.....	13
Electrical connection.....	13
Operating Instructions.....	14
Checklist and preparation before washing clothes.....	14
View of control panel.....	18
Before the first use.....	21
Select the procedure.....	21
Table of washing procedures.....	22
Care And Cleaning.....	23
Troubleshooting Tips.....	26
Remove The Problems.....	27
Appendix.....	28
Technical Specifications.....	29

Safety And Precautions

Safety and precautions

This manual contains important information on the installation, use, and care of your appliance. Please read this manual carefully before installation and operation of this machine to prevent injury and property damage.

WHAT YOU NEED TO KNOW ABOUT SAFETY INSTRUCTIONS

Warnings and Important Safety Instructions in this manual DO NOT cover all possible conditions and situations that may occur. It is your responsibility to use common sense, caution and care when installing, maintaining and operating your washer.

IMPORTANT SAFETY SYMBOLS AND PRECAUTIONS



WARNING

This indicates that hazards or unsafe practices may cause **serious personal injury or death**. To reduce the risk of fire, explosion, electric shock, or personal injury when using your washer, these basic safety precautions **SHOULD** be followed.

State of California Proposition 65 Warnings



WARNING

The California Safe Drinking Water and Toxic Enforcement Act requires the Governor of California to publish a list of substances known to the State of California to cause cancer, birth defects, or other reproductive harm, and requires business to warn of potential exposure to such substances. This product contains a chemical known to the State of California to cause cancer, birth defects, or other reproductive harm. This appliance can cause low-level exposure to some of the substances listed, including benzene, formaldehyde, and carbon monoxide.

Safety And Precautions

Important safety instructions

SAVE THESE INSTRUCTIONS



WARNING

- WARNING – To reduce the risk of fire, electric shock, or injury to persons when using your appliance, follow basic precautions, including the following:
- Read all instructions before using the appliance.
 - Do not wash articles that have been previously cleaned in, washed in, soaked in, or spotted with gasoline, dry-cleaning solvents, or other flammable or explosive substances, as they give off vapours that could ignite or explode.
 - Do not add gasoline, dry-cleaning solvents, or other flammable or explosive substances to the wash water. These substances give off vapours that could ignite or explode.
 - Under certain conditions, hydrogen gas may be produced in a hot-water system that has not been used for 2 weeks or more. **HYDROGEN GAS IS EXPLOSIVE.** If the hot-water system has not been used for such a period, before using a washing machine, turn on all hot-water faucets and let the water flow from each for several minutes. This will release any accumulated hydrogen gas. As the gas is flammable, do not smoke or use an open flame during this time.
 - Always unplug the washing machine from the power supply before attempting any service. Disconnect the power cord by grasping the plug, not the cord.
 - To reduce the risk of fire, clothes, cleaning rags, mop heads and the like which have traces of any flammable substance, such as vegetable oil, cooking oil, petroleum based oils or distillates, waxes, fats, etc., must not be placed in the washing machine. These items may contain flammable substances which, even after washing, may smoke or catch fire.
 - Never place items in the washer that have been dampened with gasoline or any combustible or explosive substance. Do not wash or dry anything that has been soaked in or spotted with any type of oil (including cooking oils). Doing so can result in fire, explosion, or death.
 - Do not allow children to play on or in the appliance. Close supervision of children is necessary when the appliance is used near children.
 - Pets and kids may climb into the machine. Check the machine before every operation.
 - Glass door or protector may be very hot during the operation. Keep kids and pets far away from the machine during the operation.
 - This machine is not intended for use by persons (including kids) with reduced physical, sensory or mental capabilities, or lack of experience and knowledge, unless they have been given supervision or instruction concerning use of the machine by a person responsible for their safety.
 - Kids should be supervised to ensure that they do not play with the machine.
 - When children become old enough to operate the appliance, it is legal responsibility of the parents or legal guardians to ensure that they are instructed in safe practices by qualified persons.

Safety And Precautions

Important safety instructions

SAVE THESE INSTRUCTIONS



WARNING

- Do not machine wash fiberglass materials (such as curtains and window coverings that use fiberglass materials.) Small particles may remain in the washing machine and stick to fabrics in subsequent wash loads causing skin irritation.
- Before the appliance is removed from service or discarded, remove the door and cut off the power cord.
- Do not reach into the appliance if the tub or agitator is moving.
- Do not install or store this appliance where it will be exposed to the weather.
- Do not tamper with controls.
- Do not repair or replace any part of the appliance or attempt any servicing unless specifically recommended in the user-maintenance instructions or in published user-repair instructions that you understand and have the skills to carry out.
- Pull out its plug from the power socket before cleaning or maintenance.
- Make sure that all pockets are emptied.
- Sharp and rigid items such as coin, brooch, nail, screw or stone etc. may cause serious damages to this machine.
- Pull out its plug and cut off water supply after the operation.
- Please check whether the water inside the drum has been drained before opening its door. Please do not open the door if there is any water visible.
- Do not try to repair the machine by yourself. The machine may be damaged or more troublesome repair work may be caused and even dangerous operation may take place if it is repaired by any inexperienced or unqualified staff.
- If the plug (power cord) is damaged, it shall be replaced by the manufacturer or a service agent to avoid any danger.
- Take care that power voltage and frequency shall be identical to those of washing machine.
- Do not use any socket with rated current less than that of washing machine. Never pull out power plug with wet hand.
- To ensure your safety, power cord plug must be inserted into an **grounded** three-pole socket. Check carefully and make sure that your socket is properly and reliably **grounded**.
- This machine shall be repaired only by an authorized service center and only authentic accessories can be used.
- An appliance shall be clearly and permanently marked with a warning that the appliance is intended for use only with fabrics that have been washed with water as a cleaning agent.
- To reduce the risk of fire, do not dry articles containing foam rubber or similarly textured rubber like materials.

Safety And Precautions

Important safety instructions

SAVE THESE INSTRUCTIONS



WARNING

- If connected to a circuit protected by fuses, use time-delay fuses with this appliance.
- Do not dry articles that have been previously cleaned in, washed in, soaked in, or spotted with gasoline, dry-cleaning solvents, or other flammable or explosive substances, as they give off vapours that could ignite or explode.
- Do not use fabric softeners or products to eliminate static unless recommended by the manufacturer of the fabric softener or product.
- Do not use heat to dry articles containing foam rubber or similarly textured rubber-like materials. The interior of the appliance should be cleaned periodically by qualified service personnel.
- Do not place items exposed to cooking oils in your dryer. Items contaminated with cooking oils may contribute to a chemical reaction that could cause a load to catch fire.

Safety And Precautions

Grounding instructions



WARNING

- This appliance must be grounded . In the event of a malfunction or breakdown, grounding will reduce the risk of electric shock by providing a path of least resistance for the electric current. This appliance is equipped with a cord that has an equipment

- **Grounding** conductor and a grounding plug. The plug must be plugged into an appropriate outlet that is properly installed and grounded in accordance with all local codes and ordinances.

WARNING-Improper connection of the equipment grounding conductor can result in electric shock. Connect to individual branch Circuit. Check with a qualified electrician or serviceman if you are in doubt as to whether the washer is properly grounded.

DO NOT modify the plug provided with the appliance if it will not fit the outlet .

Please have a proper outlet installed by a qualified electrician.

Before operating this machine

- Packing materials may be dangerous to the kids. Please keep all packing materials (plastic bags, foams etc) far away from the kids.
- Washing machine shall not be installed in bath room or very wet rooms as well as in the rooms with explosive or caustic gases.
- Make sure that the water and electrical devices must be connected by a qualified technician in accordance with the manufacturer's instructions and local safety regulations.
- Before operating this machine, all packages and transport bolts must be removed. Otherwise, the washing machine may be seriously damaged while washing the clothes.
- Before washing the clothes **for the first time**, the washing machine shall be operated in cotton and hot water procedures without the clothes inside .
- This washing machine is for indoor use only.



WARNING

Attention shall be paid to protecting the machine



WARNING

- Do not climb up and sit on top cover of the machine.
- Do not lean against machine door.
- Please do not close the door with excessive forces. If it is found difficult to close the door, please check if the excessive clothes are put in or distributed well.

Cautions when moving the machine



WARNING

- Transport bolts shall be reinstalled to the machine by a specialized person.
- The accumulated water shall be drained out of the machine.
- Handle the machine carefully. Never hold each protruded part on the machine while lifting.
- Machine door can not be used as the handle during the conveyance.

Safety And Precautions

Cautions when washing clothes



WARNING

- Cold city water shall be used and hot water may be also connected according to the local situations.
- Your washing machine is only for home use and is only designed for the textiles suitable for machine washing.
- Flammable and explosive or toxic solvents are forbidden. Gasoline and alcohol etc. shall not be used as detergents. Please only select the detergents suitable for machine washing, especially for front loading .
- **Do not wash carpets in this machine.**
- Be careful of burning when washing machine drains hot washing water.
- Never refill the water by hand during washing.
- After the program is completed, please open the door after the bell or disconnect the power supply to the machine.
- **For your safety, we suggest you disconnect water and power supply immediately after the clothes are washed.**
- Always follow the fabric care instructions recommended by the clothing manufacturer.
- Do not use the washing machine if it has a worn power cord or loose plug. Contact an authorized service agent.
- Do not operate the washing machine if any guards, panels and /or fasteners except transport fixing bolts have been removed. Check the fill hose connections on a regular basis to ensure that they are tight and not leaking.
- Do not operate the washing machine if parts are missing or broken.
- Do not touch the door if washing at high temperatures.

Note;

- The Important Safeguards and Warnings indicated in this manual do not cover all possible conditions which may occur. Common sense, caution and care must be exercised when installing, maintaining or operating the washing machine.
- Always contact your dealer, **distributor**, service agent or the manufacturer about any problems or conditions that you do not understand.

Installation Requirements

Installation requirements



WARNING

- 1.This machine must be **grounded** properly. If there is any short circuit, **grounding** can reduce the danger of electrical shock.
This machine is equipped with power cord, which includes plug, **grounding** wire at **grounding** terminal.
- 2.Washing machine shall be operated in a circuit separate from other electrical appliances. Otherwise, power protector may be tripped or fuse may be burned out.

WARNING – Risk of Fire

Clothes dryer installation must be performed by a qualified installer.

Install the clothes dryer according to the manufacturer's instructions and local codes.

Improper installation may obstruct clothes dryer airflow and increase the risk of fire. To reduce the risk of severe injury or death, follow all installation instructions. Save these instructions.

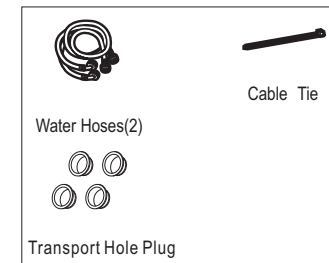
Failure to comply with these warnings could result in serious personal injuries.Note:Environmental Protection

- If you plan to **dispose of** this machine, please comply with the local waste disposal regulations. Cut off the power cord so that it will not be put into reuse.
Remove the door so that kids and animals will not be trapped in the machine.
- Do not use excessive detergents.
- Decontaminant and **bleach** can be used to pre-treat the stains on the clothes only when very necessary.

Tools and parts

Gather the required tools and parts before starting installation. The parts supplied are in the washer drum.

- 1/4" nut driver 3/8"socket with ratchet
- 3/8" open-end wrench
- Adjustable wrench or 7/16" socket with ratchet
- Adjustable wrench or 9/16" open-end wrench
- Channel-lock adjustable pliers
- Carpenter's level



Installation Requirements

Location requirements

Selecting the proper location for your washer improves performance and minimizes noise and possible washer “walk.” Your washer can be installed under a custom counter, or in a basement, laundry room, closet, or recessed area. See “Drain System.” Companion appliance location requirements should also be considered. Proper installation is your responsibility.

You will need


1. A water heater set to deliver 120° F (49° C) water to the washer.
2. A grounded electrical outlet located within 6 ft. (1.8 m) of where the power cord is attached to the back of the washer. See “Electrical Requirements.”
3. Hot and cold water faucets located within 4 ft. (1.2 m) of the hot and cold water fill valves, and water pressure of 20–100 psi (137.9–689.6 kPa).
4. A level floor with a maximum slope of 1" (25 mm) under entire washer. Installing the washer on soft floor surfaces, such as carpets or surfaces with foam backing, is not recommended.
5. A sturdy and solid floor to support the washer with a total weight (water and load) of 200 lbs.
6. Do not operate your washer in temperatures below 32° F (0° C). Some water can remain in the washer and can cause damage in low temperatures.

Installation clearances

1. The location must be large enough to allow the washer door to be fully opened.
2. Additional spacing should be considered for ease of installation and servicing. The door opens more than 90°, and it is not reversible.
3. Additional clearances might be required for wall, door, and floor moldings.
4. Additional spacing of 25 mm on all sides of the washer is recommended to reduce noise transfer.
5. Companion appliance spacing should also be considered.

Electrical requirements

⚠ WARNING



Electrical Shock Hazard

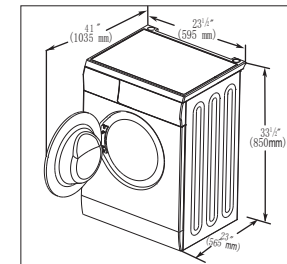
Connect to grounded 3 prong outlet with an individual 12 amp branch circuit protected by a 12 amp circuit breaker.
Connect to individual branch circuit.
Do not remove ground prong.
Do not use an adapter.
Do not use an extension cord.
Failure to follow these instructions can result in electrical shock, fire, or death.

Installation Requirements

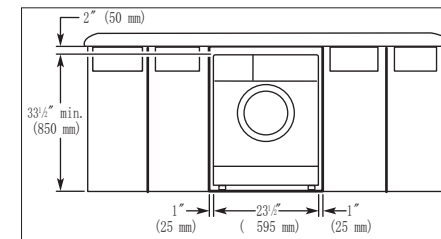
Electrical requirements

1. A 120v, 60Hz, AC only, 15- or 20 amp, fused electrical supply is required. A time-delay fuse or circuit serving only this appliance **must be** provided.
2. This washer is equipped with a power supply cord having a 3 prong grounding plug.
3. To minimize possible shock hazard, the cord must be plugged into a mating, 3 prong, grounding type outlet, grounded **in accordance with local** codes and ordinances.
If a mating outlet is not available, it is the personal responsibility and obligation of the customer to have the properly grounded outlet installed by a qualified electrician.
4. If codes permit and a separate ground wire is used, it is recommended that a qualified electrician determine that the ground path is adequate.
5. Do not ground to a gas pipe.
6. Check with a qualified electrician if you are not sure the washer is properly grounded.
7. Do not have a fuse in the neutral or ground circuit.

Washer dimensions



The dimensions shown are for the recommended spacing. Custom **under-counter** installation



Unpacking the washing machine

Unpack your washing machine and check if there is any damage during the transportation. Also make sure that all the items (as shown in **Page 8**) in the attached bag are received. If there is any damage to the washing machine during the transportation, or any item is missing, please contact the local dealer immediately.

Installation Instructions

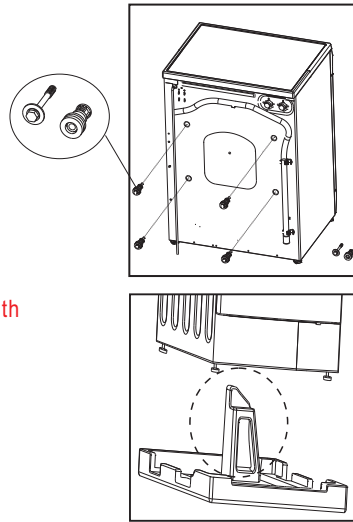
Dispose of the packing materials

The packing materials of this machine may be dangerous to kids. Please **dispose of** them properly and avoid easy touch by kids. Please **dispose of** the related packing materials according to the relevant local regulations. Please do not throw the packing materials away together with the other **household trash**.

Remove transport bolts and foam

Before using this washing machine, transport bolts must be removed from the backside of this machine. Please take the following steps to remove the bolts:

1. Loosen all bolts with **wrench** and then remove them.
2. Cover the holes with transport hole plugs.
3. Keep the transport bolts properly for future use.



Make sure the small triangle foam is removed **together with the bottom piece**. If not, lay the unit **down on** with side surface, then remove the small foam from the unit bottom manually.

Select the location

Before installing the washing machine, the location characterized as follows shall be selected:

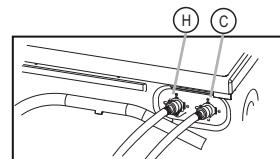
- Rigid, dry, and level surface (if not level, please make it level with reference to the **section "Level the washer" on Page 13**)
- Avoid direct sunlight
- Sufficient ventilation
- Room temperature is above 0 C
- Keep far away from the heat resources such as coal or gas.

Make sure that the washing machine will not stand on power cord.

Do not install the washing machine on the carpet floor.

Connect inlet pipe

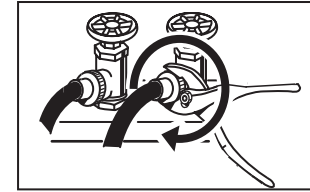
Connect the inlet pipe as indicated in the figure. For the model which has hot valve, please connect the hot **valve** to hot water tap.



Installation Instructions

Install inlet pipe

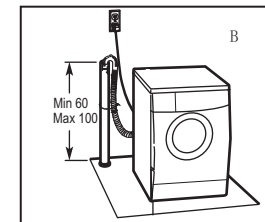
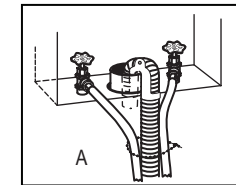
1. Connect the elbow to tap and fasten it clockwise.
2. Connect the other end of inlet pipe to the inlet valve at the backside of washing machine and fasten the pipe tightly clockwise.



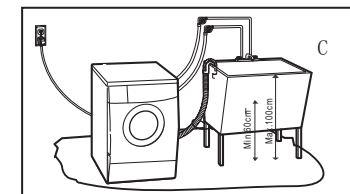
Note: after connection, if there is any leakage with hose, then repeat the steps to connect inlet pipe. The most common type of tap shall be used to supply water. If tap is square or too big, then standard tap shall be changed.

Drain system options

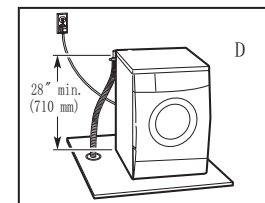
Standpipe drain system – wall or floor (views A & B)
The standpipe drain requires a minimum diameter standpipe of 2" (50 mm). The minimum carry-away capacity can be no less than 17 gal. (64 L) per minute. The top of the standpipe must be at least 60cm high and no higher than 100cm from the bottom of the washer.



Laundry tub drain system (view C)
The laundry tub needs a minimum 20 gal. (76 L) capacity. The top of the laundry tub must be at least 60cm above the floor.



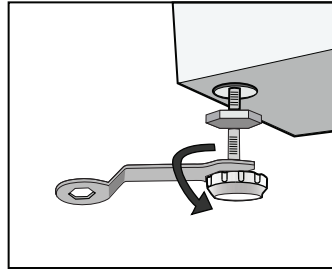
Floor drain system (view D). The floor drain system requires a siphon break that may be purchased separately. See "Tools and Parts". The siphon break must be a minimum of 28" (710 mm) from the bottom of the washer. Additional hoses might be needed.



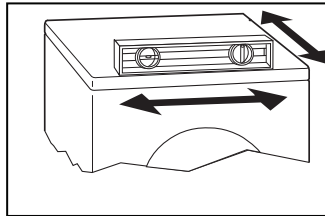
Installation Instructions

Level the washer

1. When positioning the washing machine, please first check if the legs are closely attached to the cabinet. If not, please turn them to their original positions with hand or **wrench** and tighten the nuts with **wrench**.
2. After positioning the washing machine, press four corners on top cover of washing machine in sequence. If the washing machine is not stable when being pressed, this leg shall be adjusted.



3. Ensure the positioning status of washing machine. Loosen the lock nut with **wrench** and turn the leg with hand until it closely contacts with the floor. Press the leg with one hand and fasten the nut closely to the cabinet with the other hand.



4. After being locked properly, press four corners again to make sure that they **have** been adjusted properly. If it is still **unstable**, repeat Steps 2 and 3.
5. Put a solid cylinder (e.g. pop cans) oppositely on the top cover of the washing machine from in the left, right, front and back directions. If the cylinder keeps stable, the washing machine is positioned level. If it rolls, the washing machine is positioned unlevel. The rolling direction is the direction of lower ground surface. Then the two legs in this direction shall be raised at the same time until the washing machine is level. Steps 1~3 are repeated to make the bottom legs **fit closely** against the ground and the nuts shall be locked tightly.

Electrical connection

- As the maximum current through the unit is 12A when you are using its heating function, please make sure the power supply system (current, power voltage and wire) at your home can meet the normal loading requirements of the electrical appliances.
- Please connect the power to a socket which is correctly installed and properly **grounded**.
- Make sure the power voltage at your place **is same as** that in the machine's rating label.
- Power plug must match the socket and cabinet must be properly and effectively **grounded**.
- Do not use multi-purpose plug or socket as extension cord.
- Do not connect and pull out plug with wet hand.
- When connecting and pulling out the plug, hold the plug tightly and then pull it out. Do not pull power cord forcibly.
- If power cord is damaged or has any sign of being broken, special power cord must be selected or purchased from its manufacturer or service center for replacement.

Operating Instructions

Operating instructions



WARNING – To reduce the risk of fire, electric shock, or injury to persons, read the **IMPORTANT SAFETY INSTRUCTIONS** before operating this appliance.

Checklist and preparation before washing clothes

Please read this operation method carefully to avoid the troubles of washing machine and damages of clothes.

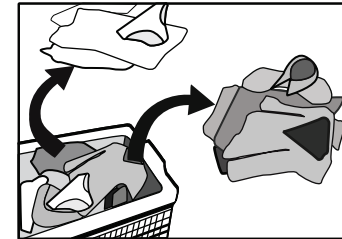
Check if the **colors will run in clothes being washed for the first time**.

After a white towel touched with liquid detergent is used to wash the **inconspicuous** corners of the clothes, check if the white towel is stained with clothes' original color.

As for the scarves and those clothes that easily get decolorized among imported clothes, please wash them separately before washing.

As for the stains on sleeves, collars and pockets, use the liquid detergent and wash it with brush gently. Finally put them into the washing machine to achieve more ideal washing effects.

As for temperature-sensitive clothes, they shall be washed as required in the labels. Otherwise, it may cause color change or distortion.



Keep in Mind:

Never put the clothes to be washed in washing machine for a long period of time.

Otherwise it may get moldy and cause spots. Therefore, please wash the clothes **in a timely fashion**.

The clothes also may get color changed or distorted if they are not washed according to the stated washing temperature.

Clothes that can not be washed by washing machine

The clothes that may get distorted if being immersed in water:

Ties, waistcoats, western-style clothes, outer garments etc. may have obvious shrinkage if being immersed in water; the decolorized clothes such as blended spinning clothes of artificial fiber etc.

Operating Instructions

Checklist and preparation before washing clothes

Wrinkle-style clothes, embossed clothes, resin clothes etc. may get distorted when being immersed in water. Among cotton and wool materials, the clothes that get easily distorted are wrinkle-style silk, fur products and fur decorations;

Clothes with decoration, long dress and traditional clothes etc are the products to get decolorized easily.

Please do not wash the clothes without material labels and washing requirements.

Never wash the clothes stained with the chemicals such as gasoline, petroleum, benzene, paint thinner and alcohol.

Please pay attention with regard to detergents

"low suds" detergent or washing powder or washing powder special for drum washing machine shall be selected according to fiber types (cotton, synthetic fiber, soft products and wool products), colors, washing temperatures, **degrees and types of dirtiness**. Otherwise, excessive bubbles may be generated and overflowed out of the drawer so that accidents may take place.

Alkali bleaches can damage clothes, so it is suggested to use as little as possible.

Powder detergents can easily leave the residues in the clothes so as to generate the bad smell, so they shall be sufficiently rinsed.

Detergent can not easily get dissolved completely if there is too much detergent or water temperature is rather low. It can remain in clothes, pipes and washing machines to pollute the clothes.

Washing shall follow the weight of clothes, **degrees of dirtiness**, local water hardness as well as the recommendations from the detergent manufacturers. Please consult the water company if you are not clear of water hardness.

Note:

Keep detergents and additives in safe and dry places out of touch by kids.

Please **remove items from pockets**.

Please check the pockets of the clothes to be washed, empty the rigid items such as decorations and coins, otherwise washing machine may be damaged or have abnormal troubles.

For the clothes to be washed, they are classified according to the following characteristics:

The symbol types of care labels: the clothes to be washed are classified into cotton, blended fiber, synthetic fiber, silk, wool and artificial fiber.

Color: **whites and** colors shall be identified. All new colorful articles shall be washed in a separate way.

Operating Instructions

Checklist and preparation before washing clothes

Size: the articles of different sizes are washed together to increase the washing effects.

Sensitivity: soft articles shall be washed separately. As for new pure wool textiles, curtains and silks, the soft washing procedure shall be selected. Check the labels in all washing articles.

The clothes shall be sorted before being put into washing machine. As for the curtains with hooks, the hooks shall be removed before being washed.

The decorations on the clothes may damage the washing machine. As for the clothes with buttons or embroideries, they shall be turned over before being washed.

Fasteners:

Zippers shall be zipped and buttons or hooks shall be fixed. The loose band or ribbon shall be bound together.

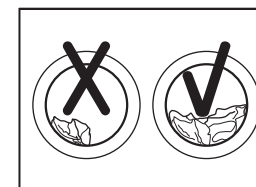
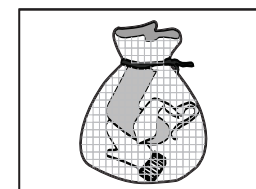


WARNING

It is suggested to put bras into the pillow slip with zip or buttons sealed to prevent the steel wire from popping out of bras into the drum and damaging the machine.

Especially delicate textiles such as **lace curtains and**, small articles (tight socks, handkerchiefs, ties etc.) shall be put into string bag for washing.

When washing a single big and heavy **item** such as Turkish towels, jeans, wadded jackets etc., it may easily cause great eccentricity and give alarm due to great unbalance. Therefore it is suggested to add one or two more clothes to be washed together so that draining can be done smoothly.



Clean away dusts, stains and pet hairs from the clothes.

The clothes may be damaged and disturb washing effects during the friction between dusts, stains and clothes.

To protect baby skin

Baby articles (baby clothes and towels) including **diapers** shall be washed separately.

If they are washed together with the adults' clothes, they may be infected. Rinsing times shall be increased to ensure the thorough rinsing and cleaning without the detergent residues.

It is suggested that the parts that are easily stained such as white sockets, collars and sleeves etc. shall be hand washed before being put into washing machine to achieve more ideal washing effects.

Please use powder or liquid detergents. The residues of the soap could remain in the gaps of the clothes if soap is used.

Operating Instructions

Checklist and preparation before washing clothes

Confirm the washing capacity:
Do not put excessive washings; otherwise it may affect the washing effects. Please confirm the maximum **allowable** washing quantity according to the following table.

Fiber Type	Maximum Loading Capacity
	7.0kg
Cotton	7.0kg
Synthetic	3.5kg
Wool	2.5kg

The clothes which easily get fuzzed shall be turned **inside out** for washing

The clothes which easily get fuzzed shall be washed separately; otherwise the other articles can be **contaminated**. Preferably, black clothes and cotton clothes shall be washed separately because they can easily **become covered with fibers** of other colors when being washed together.

Please check before washing.

Washing machine shall not wash water-proof materials (ski suits, **outer diaper pads**, curtains).

As for the fiber products that water can not get soaked easily into such as water-proof cushions, and clothes, it is better not to wash. Otherwise there will be water bursting out or abnormal vibration to cause danger while rinsing and draining so that the clothes also may be damaged. (Such as **outer diaper pads**, raincoats, umbrella, ski suits, car covers, sleeping sacks etc.)

Cautions during Draining

Draining of normal clothes:

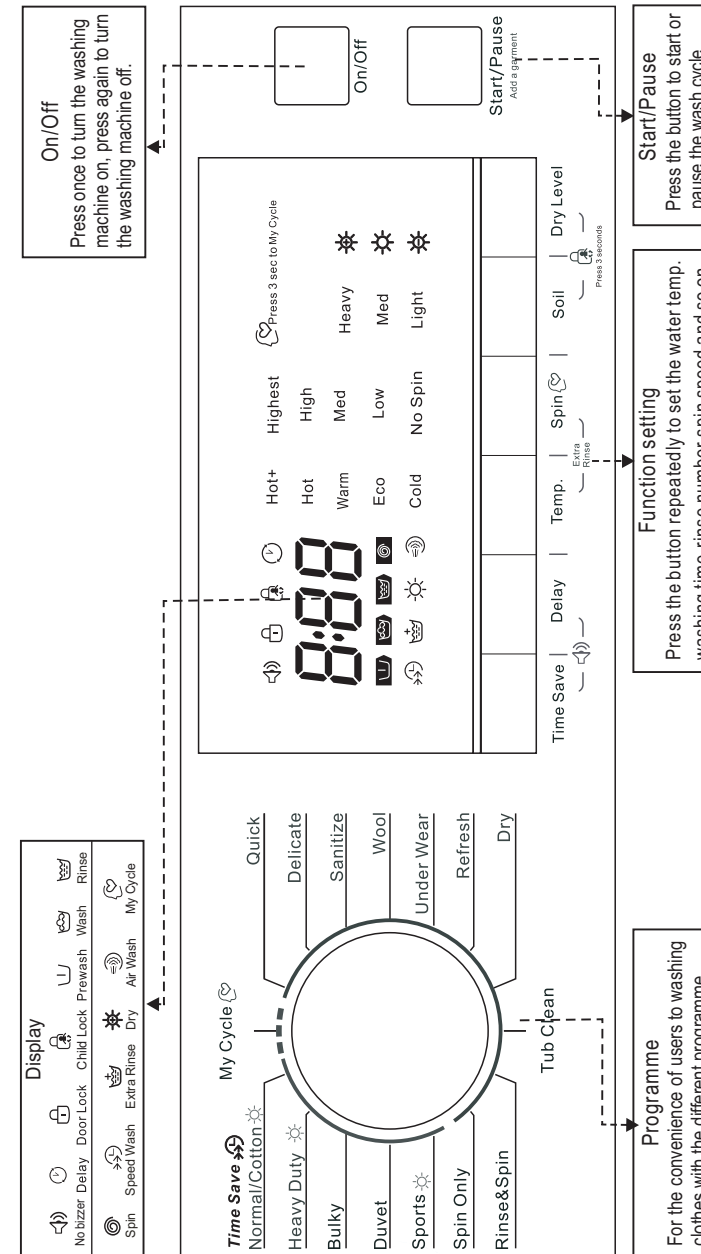
Wash water is drained through drain hole.

Draining of water-proof clothes and fiber products:

In the normal washing and draining status, moistures of water-proof clothes and fiber products can not be drained while water is gathered in one direction so that the eccentricity of washing machine is too great and vibration or moving is caused.

Operating Instructions

View of control panel



- Notes:**
1. The Control panel line chart is for reference only, Please refer to real product as standard.
 2. The Control panel could be changed without written notice. Please visit the website of Washing Machine or call up the service line for consultation.
 3. The programme with can be added with Dry function as in table on page 22.

Operating Instructions

View of control panel

View of the programme

- Normal/Cotton

You can select this procedure to wash the daily washable clothes. The washing period is quite long with quite strong washing **intensity**.

- Heavy Duty

This program is intended for washing the heavy clothing .

- Bulky

This program is intended for washing the large clothing .

- Duvet

This program is specially designed for washing duvet **covers**.

- Sports

You can select this procedure to wash the sportswear.

- Spin Only

Separate Spin Procedure.

- Rinse&Spin

Separate Rinse&Spin Procedure.

- Tub Clean

This cycle is specially set in this machine to clean the drum and tube. It **applies** high temperature sterilization to make the clothes washing more green. When this procedure is performed, the clothes or other washing cannot be added. When proper amount of chlorine bleaching agent is put in, the barrel cleaning effect will be better.

- Quick

This procedure is suitable for washing few and not very dirty clothes quickly.

- Delicate

You can select this procedure to wash your delicate clothes. Its washing **intensity** is gentler and revolution speed is less compared with the procedure "Synthetic". It is recommended for the articles to be washed **gently**.

- Sanitize

It **applies** high temperature sterilization to **sanitize** the clothes ,but **does not drain** the water, you need to select other programme to **complete** the process.

- Wool

You can select this procedure to wash the wool textiles labeled with "Machine Wash". Please select the proper washing temperature according to the label on the articles to be washed. Furthermore, the proper detergent shall be selected for wool textiles.

- Under Wear

Underwear cycle which is specially made for washing **underwear** is more demanding on rinsing strength and will operate one more time than other cycles.

- Refresh

During this cycle, there is only hot air rather than water ejecting from inside the drum to wash the clothing.

- Dry

Select Very Dry or Light Dry with the knob, The drying temperature is different, select the drying time according to the load .

-My Cycle

Press Spin 3sec.for **My Cycle to memorize** the programme.The default **My Cycle** procedure is Normal/Cotton.

Operating Instructions

View of control panel

The Special function

- Time Save

The function can decrease the washing time.

- Delay

Delay function can be set with this button, the delaying time is 0-24H.

Set the delay function:

- 1.Select a programme;
- 2.Press the Delay button to choose the time;
- 3.Press Start/Pause to commence the Delay operation.

Cancel the Delay function :

Press the Delay button until the display will be 0H . It should be pressed before starting the program. If the program already started, should press the On/Off button.

Notes: If there is any break in the power supply while the machine is operating, a special memory stores the selected programme and when the power is restarted ,press the Start/Pause button to **continue**.

- Add a garment

This operation can be executed during the washing procedure. When the drum of the washing machine is still rolling and there is large amount of water with high temperature in the **drum, the** state is unsafe and the door cannot be opened forcefully. Press

«Start/Pause» to add a **garment midway during the** function .

Please follow the steps as **below**:

- 1.Wait until the drum stops rotation.
- 2.The door lock is unlocked.
- 3.Close the door when the **additional clothes** are loaded and **re-press** the «Start/Pause» button.

Operating Instructions

Before the first use

Before the first use, the washing machine shall be operated in one round of the whole procedures without clothes in as follows:

- 1.Connect power source and water.
- 2.Put a little detergent into the box and close it.
- 3.Press the button "Power".
- 4.Press the button "Start/Pause".

The drawer is separated as follows:

I: Pre-detergent or washing powder.

II: main detergent, softener, pre-dip, bleaching or decontaminating products.

☼: washing additive, such as fabric softener .

Put detergent into washing machine.

- 1.Pull out the drawer.
- 2.Fill pre-detergent into Case I (when necessary).
- 3.Fill detergent into Case II.
- 4.Fill softener into Case ☼ (when necessary).

Notes:

- As for the agglomerated or ropy detergent or additive, before they are poured into the detergent box, it is suggested to use some water for dilution to prevent the inlet of detergent box from being blocked and overflowing while filling water.
- Please choose suitable type of detergent for the various washing temperature to get the best washing effect with less water and energy consumption.

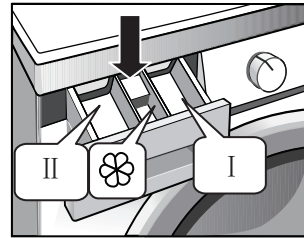
Start up washing machine

Connect the power. Check if water pipes are connected properly. Open the tap completely. Put in the clothes to be washed and fill **detergent and softener compartments**. Then press the button "Power", Select the proper procedures and functions and press the button "Start/Pause".

Select the procedure

The proper washing procedures shall be selected according to the types, quantities, and dirtiness of the clothes to be washed in combination with the following washing temperature table.

Extra Hot	Seriously besmirched, pure white cotton or linen (for example: table cloths, towels, bed sheets)
Hot	Moderately besmirched, colorful linen , cotton and synthetic articles with certain decolorizing degree (for example: shirts, night pajamas; Slightly besmirched, pure white linen (for example: underwear)
Warm	Normally besmirched articles (including synthetic and wool)



Operating Instructions

Table of washing procedures

Cycle	Temp. (Default)	Spin Speed	Soil Level	Dry Level	Extra Rinse	Time Saver
Normal/Cotton(Dry)	Hot/Hot/Warm/Eco/Cold	Highest/High/No Spin	Heavy/Med/Light	Heavy/Normal/Light/N	N	N
Heavy duty(Dry)	Hot/Warm/Eco/Cold	highest/High/Medium/Low/No Spin	Heavy/Med/Light	Heavy/Normal/Light/N	N	N
Bulky	Hot/Warm/Eco/Cold	highest/High/Medium/Low/No Spin	Heavy/Med/Light	NA	N	N
Duvet	Hot/Warm/Eco/Cold	High/Medium/Low/No Spin	Heavy/Med/Light	NA	N	N
Sports(Dry)	Hot/Warm/Eco/Cold	highest/High/Medium/Low/No Spin	Heavy/Med/Light	Heavy/Normal/Light/N	N	N
Spin only	NA	highest/High/Medium/Low/No Spin	NA	NA	NA	NA
Rinse spin	NA	highest/High/Medium/Low/No Spin	NA	NA	Y	NA
Tub clean	NA	highest/High/Medium/Low/No Spin	NA	NA	NA	NA
Dry	NA	NA	NA	Heavy/Normal/Light	NA	NA
Refresh	NA	NA	NA	NA	NA	NA
Under wear	Hot/Warm/Eco/Cold	highest/High/Medium/Low/No Spin	Heavy/Med/Light	NA	N	N
Wool	Warm/Eco/Cold	High/Medium/Low/No Spin	Heavy/Med/Light	NA	N	N
Sanitize	Hot+	highest/High/Medium/Low/No Spin	Heavy/Med/Light	NA	N	NA
Delicate	Warm/Eco/Cold	High/Medium/Low/No Spin	Heavy/Med/Light	NA	N	N
Quick wash	Hot/Warm/Eco/Cold	highest/High/Medium/Low/No Spin	Heavy/Med/Light	NA	N	NA

NA: Not necessary Y : Option N: No-option
 Notes: The parameters in this table are only for user's reference. The actual parameters may be different from the parameters in above mentioned table.

Care And Cleaning

Care and cleaning

Before your maintenance starts, please do pull out the power plug or disconnect power and close the tap.



WARNING

- To avoid damaging the washing machine, do not use solvents. Toxic gases may be generated and explode.
- Never use water to sprinkle and wash the washing machine.
- It is forbidden that the detergents containing PCMX are used to clean the washing machine.
- Certain internal parts are intentionally not grounded and may present a risk of electric shock only during **servicing**. Service Personnel-Do not contact the following parts while the appliance is energized: motor, pump and heater.

Cleaning and Maintenance of Washing Machine Cabinet

Proper maintenance on the washing machine can extend its working life. The surface can be cleaned with diluted non-abrasive neutral detergents when necessary. If there is any water overflow, use a cloth to wipe it up immediately. No sharp items are allowed to strike the cabinet.

Notes: formic acid and its diluted solvents or equivalent are forbidden.

Clean Internal Drum

Rust left inside the drum by the metal articles shall be removed immediately with chlorine-free detergents.

Never use steel wool.

If the Washing Machine Freezes

When the temperature drops below zero and your washing machine gets frozen, you may:

1. Disconnect the power supply for the washing machine.
2. Wash the tap with warm water to loosen inlet pipe.
3. Take down inlet pipe and immerse it in warm water.
4. Pour warm water into washing drum and wait for 10 minutes.
5. Reconnect inlet pipe to the tap and check whether inlet and outlet are working normally.

Notes: when the washing machine is reused, make sure the ambient temperature is above 0 C

Anti-freeze

If your washing machine is located in the room where it can get frozen easily, please drain the remaining water inside drain pipe and inlet pipe thoroughly.

Remove the remaining water in inlet pipe:

1. Close the tap.
2. Screw off the inlet pipe from tap and put its end **into a container**.
3. Start up any procedure except single Wash or Drain procedure. Water will be drained out of inlet pipe if any for about 40 seconds.
4. Reconnect the inlet pipe to tap.

Care And Cleaning

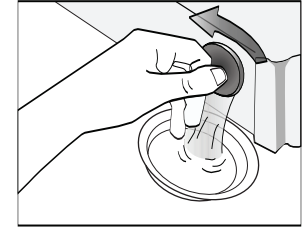
Care and cleaning

Remove the remaining water in drain pump



WARNING

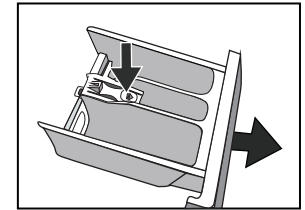
To avoid burning, it shall be done after the hot water inside the machine cools down.



Clean detergent box and grooves

Clean detergent drawer and grooves

1. Press down the arrow location on softener cover inside the drawer.
2. Lift the clip up and take out softener cover and wash all grooves with water.
3. Restore the softener cover and push the drawer into position.

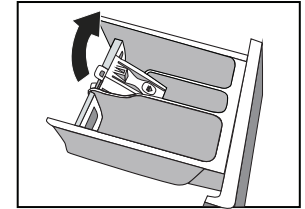


Clean inlet filter

Inlet **filter must** be cleaned if there is not any or insufficient water in when the tap is opened.

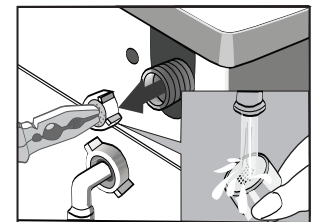
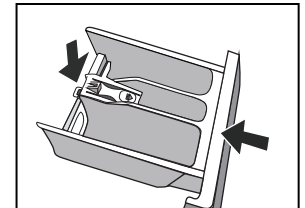
Clean the tap filter:

1. Close the tap.
2. Select any procedure except "Wash" or "Drain" procedure.
3. Press the button "Start/Pause" and keep the procedure running for about 40 seconds.
4. Remove the inlet pipe from the tap.
5. Use water to wash the filter.
6. Reconnect the inlet pipe.



Washing the filter in washing machine:

1. Screw off the inlet pipe from the backside of the machine.
2. Pull out the filter with long nose pliers and reinstall it back after being washed.
3. Reconnect the inlet pipe.
4. Open the tap and make sure there is no water leakage.
5. Close the tap.



Care And Cleaning

Care and cleaning



Pull out the power plug to avoid electrical shock before washing.
After using the washing machine, pull out the power cord and close the door

WARNING tightly.

Remove foreign matter from

Drain Pump Filter:

Drain pump filter can filter **threads and other foreign matter from the wash water.**

Clean the filter periodically to ensure the normal operation of washing machine.



According to the soil level within the cycles and the frequency of the cycles, you have to inspect and clean the filter regularly.

The pump should be inspected if the machine does not empty and/or spin;

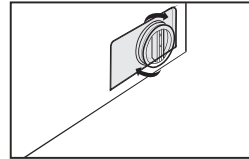
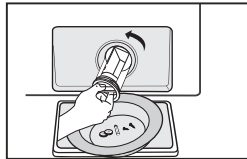
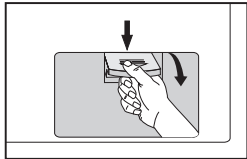
WARNING The machine makes an unusual noise during draining due to objects such as safety pins, coins etc. blocking the pump.

To clean filter, proceed as follows:

1. After the power is disconnected, use hand to open the filter cover.

2. Turn the filter down as shown with the figure and take out **foreign matter**.

3. Reinstall each part back after **foreign matter is removed**.



Warning!

When the appliance is in use and depending on the programme selected there can be hot water in the pump. Never remove the pump cover during a wash cycle, always wait until the appliance has finished the cycle, and is empty. When replacing the cover, ensure it is securely **re-tightened**.

Troubleshooting Tips

Troubleshooting tips

Troubles	Reason	Solution
Washing machine cannot start up		Check if the door is closed tightly. Check if power plug is inserted well. Check if water supply tap is opened. Check if button "On/Off" is pressed. Check if button "Start/Pause" is pressed.
Door cannot be opened	Machine's safety protection design is working.	Disconnect the power.
Heating fault	NTC is damaged and heating pipe is aging.	Can normally wash the clothes. Only cannot wash with heating. Shall contact the service center promptly.
Water leakage	The connection between inlet pipe or outlet hose and tap or washing machine is not tight. Drain pipe in the room is blocked.	Check and fasten water pipes. Clean up outlet hose and ask a specialized person to repair it when necessary.
Water has overflowed from the bottom of the machine	The inlet pipe is not connected firmly. Outlet hose has water leakage.	Fix the inlet pipe. Replace the drain hose.
Indicator or display does not light.	Power is disconnected. PC board has problems. Harness has connection problem.	Check if the power is shut down and power plug is connected correctly. If not, please call up service line.
Detergent residues in the box	Washing powder is dampened and agglomerated.	Clean and wipe the box. Use liquid detergents or the detergents special for drum.
Washing effects are not good	The clothes are too dirty. Insufficient detergent quantity.	Select a proper procedure. Add the proper detergent quantity according to the instructions in detergent package.
Abnormal noise Great vibration		Check if the fixing bolts have been removed. If cabinet is installed on a solid and level floor. Check if there are any barrettes or metal articles inside. Check if the legs on the washing machine are adjusted level.

Remove The Problems

Remove the problems

Alarm Code	Description	Reason	Solution
E30	Door lock problem	Door is not closed properly.	Restart after the door is closed
		Please call up service line if there are still troubles.	
E10	Water injecting problem when washing (water injecting time exceeds 5 minutes)	Tap is not opened or water flows too slowly. Inlet valve filter is blocked. Inlet pipe is twisted. If water is not supplied	Open the tap or wait till the water supply becomes normal. Check inlet valve filter. Straighten the water pipe. Check the other taps in the room.
		Please call up service line if there are still troubles.	
E21	Drain problem while washing (drain time exceeds 3 minutes)	Outlet hose is blocked or twisted Drain pump is blocked	Wash and straighten outlet hose. Wash drain pump filter
		Please call up service line if there are still troubles.	
Please call up the service line if there is any other problem.			

Appendix

Appendix

Care Label

Graphic Symbol	Illustration	Graphic Symbol	Illustration
	Hand Wash		No Machine Wash
	Washing (including Machine Wash and Hand Wash)		Do not Wash
	Dry Clean		No Dry Clean
	Warmly Dry Clean		No Wring
	Bleach		No Bleach
	Tumble dry		Do not Tumble Dry
	Iron		Do not Iron
	Steam Iron		Iron with Cloth
	Medium Temperature and Max. Temperature 150°C		Dry after Wash
	Line Dry		Line Dry in Shade

To avoid fire, electrical shock and other accidents, please remember the following:

- Only the voltage indicated in power label can be used. If you are not clear of the voltage at home, please contact the local power bureau.
- When you are using the heating function, the maximum current through the washing machine will reach 12A. Therefore, please make sure the power supply units (current, voltage and cable) can meet the normal load requirements for the machine.
- Protect the power cord properly. Power cord shall be fixed well so that it will not trip people and be damaged. Special attention shall be paid to the socket. It shall be plugged into the sockets easily and attention shall be paid to the plug location.
- Do not make the wall-mounted socket overloaded or cable extended. Overloading of the wiring may cause fire or electrical shock. Do not pull out power plug with wet hand.
- To ensure your safety, power plug shall be inserted into a grounded three-pole socket. Carefully check and ensure that your socket is properly and reliably grounded.



WARNING

Technical Specifications

Technical specifications

Parameter	
Power Supply	120-127V, 60Hz
Dimension(W*D*H)	595*565*850
Net Weight	79kg (174lb)
Washing Capacity	7.0kg (15.4lb)
Rated Current	12A
Standard Water Pressure	0.05MPa~1MPa